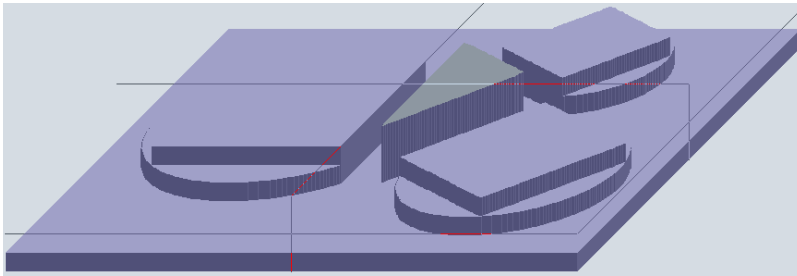
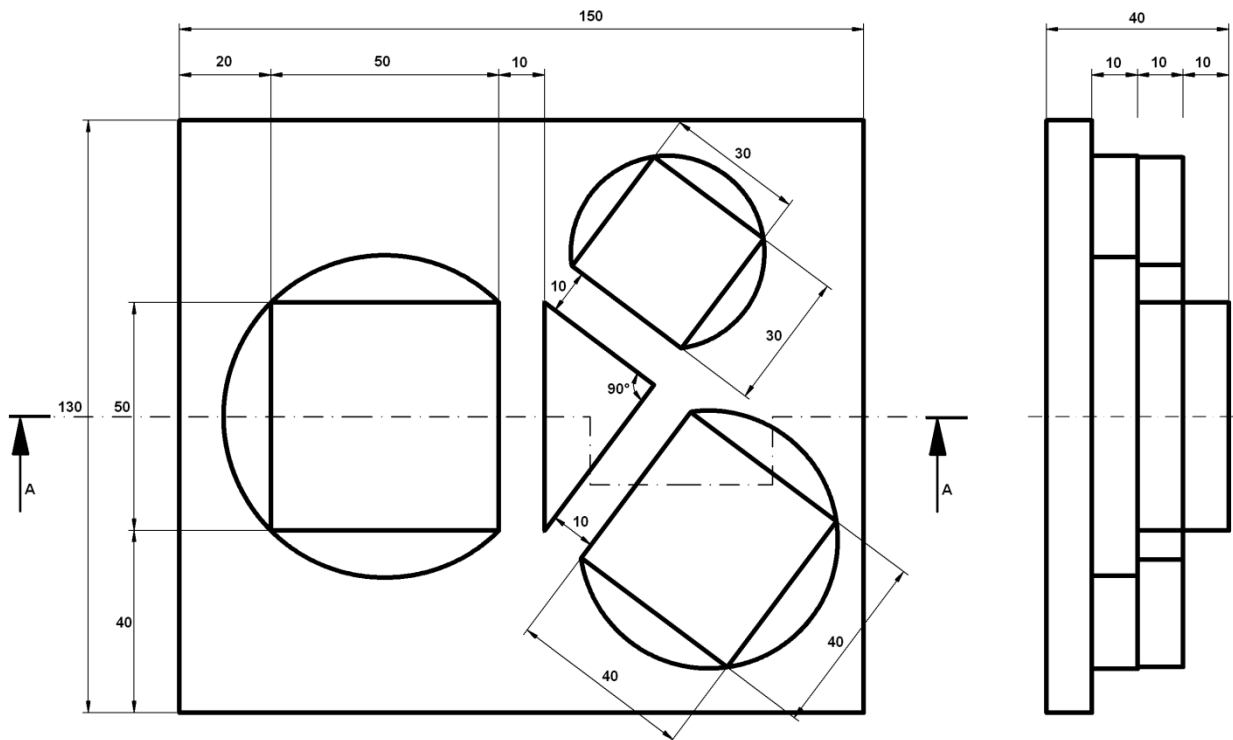
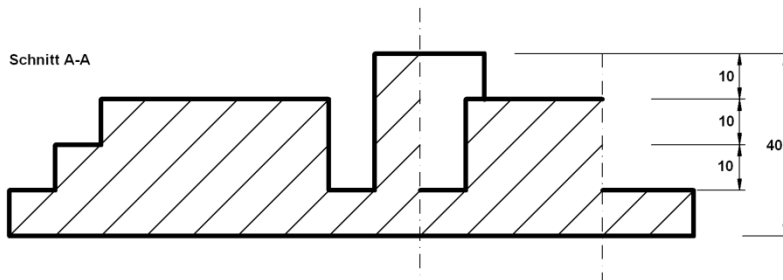


# Pythagoras ☺ Training CNC-Fräsen



Rohteilmaße: 150 x 130 x 20  
 Bearbeitung: ▽ und ▽▽▽  
 Thema: Geometrie  
 Dreiecke  
 Quadrate  
 Kreisbögen



Satz des Pythagoras:  $A^2 + B^2 = C^2 \Rightarrow 30^2 + 40^2 = 50^2$